

“Bearded Dragon” Lizard



Clues

1. This animal has a long tail and four little legs.
2. This animal eats bugs, vegetables, and fruit.
3. If you keep this animal as a pet, it will require a tank with a special basking bulb so it can keep warm.
4. This animal is a reptile.
5. This animal has scales on its face that can puff up and look like a beard!

Skunk



Clues

1. This animal has black and white fur.
2. This animal is nocturnal (active at night).
3. This animal is about the size of a house cat.
4. In the wild, this animal can spray.
5. As a pet, it has its “stink” glands removed.

Sugar Glider



Clues

1. This animal is covered in fur.
2. This animal has large eyes and excellent night vision.
3. This animal is a tiny marsupial (it has a pouch)!
4. This animal looks kind of like a small squirrel.
5. This animal can “glide” from tree to tree.

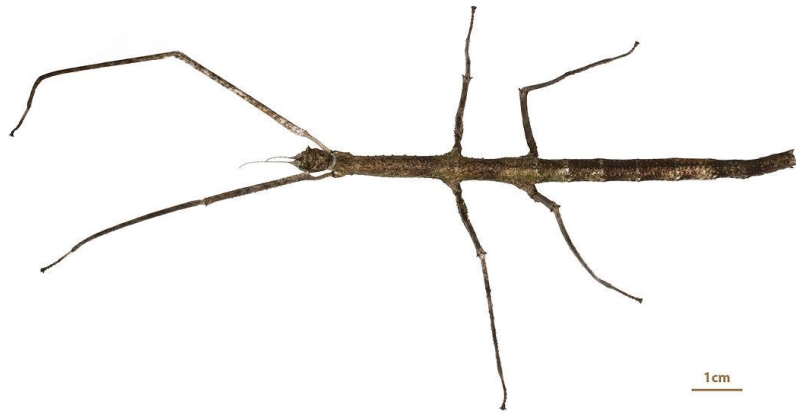
Hermit Crab



Clues

1. This animal is usually reddish, orange, or brown-colored.
2. In the wild, this animal lives near the ocean.
3. This animal uses its two claws to defend itself against predators.
4. This animal finds an empty shell for a home.

Stick Insect



Clues

1. This animal has six legs.
2. This animal can be brown, black, or green.
3. This animal lives in the forest.
4. This animal blends in with the twigs and branches.
5. These animals hold the record for longest insects in the world.

Potbellied Pig



Clues

1. This animal loves grass, soil, and mud.
2. This animal is very smart and can be trained.
3. This animal has very little hair.
4. This animal has a snout and hooves.
5. This animal is related to your morning bacon.

Tarantula



Clues

1. This animal moves slowly.
2. This animal has eight hairy legs.
3. This animal bites its prey with its fangs.
4. This animal primarily eats insects.
5. This animal lives in a burrow in the ground and can spin silk.

Rat



Clues

1. This tiny animal has fur and whiskers.
2. This animal has an excellent memory.
3. Its thin tail helps it to balance and keep cool.
4. This animal's teeth never stop growing.
5. This animal "laughs" when it plays.

Peculiar Pets

Guessing Game

Read the clues first.

See if the students can guess the animal.

Reveal the picture and see if they were right!